

**TSi SERIES LOUDSPEAKERS**

INCREDIBLE SOUND, AFFORDABLE PRICE



**SERIES** | CATALOG

**polk**audio®

### TS/ SERIES

The TS/ Series raises the standard for great sounding speakers that also offer incomparable value. Comprised of three tower designs, two bookshelf and two matching center channels, TS/ features a contemporary look that was inspired by our top-of-the-line audiophile LS/ Series and designed to work with today's most stylish televisions and electronic components. TS/ offers entry-level component speaker pricing combined with renowned Polk Audio® performance. These are speakers that produce sound that's open, spacious and clear, even when driven by modestly-powered amplifiers and receivers.



HIGH-GLOSS PIANO FINISH DETAIL

### TS/500

- 1" (25mm) bilaminate silk/polymer composite Dynamic Balance® dome tweeter with powerful neodymium magnet structure delivers clear and detailed high frequency response for realistic reproduction of vocals and instruments.
- 6 1/2" (165mm) Dynamic Balance bilaminate organic fiber drivers are lightweight and stiff with good damping for high efficiency, excellent bass and lower distortion.
- Multiple small-diameter driver design delivers a more open, "box-less," three-dimensional sound.
- Critically-tuned floor-firing port minimizes port noise ("chuffing") for good low frequency extension, resulting in natural, full-bodied sound with rich bass, regardless of room placement.
- High-gloss piano finish complements the latest trends in flat screen TVs.



TS/500



polk  
technology

#### ANTI-RESONANT ENCLOSURE

Cabinet resonance can ruin the sound of an otherwise well-designed speaker. You don't want to hear your speaker cabinets humming along with the music, you want to hear the uncolored sound launched by the drivers and tweeters. We take special pains to make sure that Polk speaker cabinets are resonance-free. All wood cabinet Polk Audio loudspeakers are constructed of low-resonance MDF instead of the cheaper and more resonant particle board used by many competitive speaker brands. See more about Anti-Resonant Enclosure at [www.polkaudio.com/catalog/technology/](http://www.polkaudio.com/catalog/technology/).

**TSi400, TSi300**

- 1" (25mm) bilaminate silk/polymer composite Dynamic Balance dome tweeter with powerful neodymium magnet structure delivers clear and detailed high frequency response for realistic reproduction of vocals and instruments.
- 5 1/4" (133mm) Dynamic Balance bilaminate organic fiber drivers are lightweight and stiff with good damping for high efficiency, excellent bass and lower distortion.
- Multiple small-diameter driver design delivers a more open, "box-less," three-dimensional sound.
- Critically-tuned floor-firing port minimizes port noise ("chuffing") for good low frequency extension, resulting in natural, full-bodied sound with rich bass, regardless of room placement.
- High-gloss piano finish complements the latest trends in flat screen TVs.

**TSi500**

OVERALL DIMENSIONS:  
44 3/8" H X 8 1/4" W X 14 3/4" D (112.71CM H X 20.95CM W X 37.46CM D)  
OVERALL FREQUENCY RESPONSE: 28Hz - 25kHz

**TSi400**

OVERALL DIMENSIONS:  
38 7/8" H X 7" W X 14 1/4" D (98.74CM H X 17.78CM W X 36.2CM D)  
OVERALL FREQUENCY RESPONSE: 34Hz - 25kHz

**TSi300**

OVERALL DIMENSIONS:  
36 3/8" H X 7" W X 14 1/4" D (92.39CM H X 17.78CM W X 36.2CM D)  
OVERALL FREQUENCY RESPONSE: 38Hz - 25kHz

SEE SPECIFICATIONS FOR MORE DETAILED PRODUCT INFORMATION.



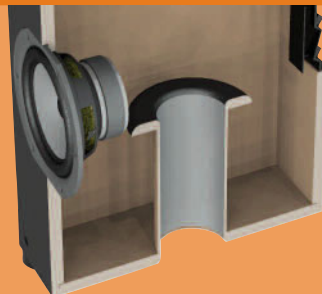
TSi400



TSi300

**CRITICALLY TUNED FLARED PORTS**

All TSi models feature Critically Tuned Flared Ports. Flared Ports minimize port noise ("chuffing") and ensure good low frequency extension with low distortion. With Flared Ports, TSi speakers reveal realistic, natural, full-bodied sound with rich bass.



polk  
technology

**TSi200**

- 1" (25mm) fabric/polymer composite Dynamic Balance dome tweeter with powerful neodymium magnet structure delivers clear and detailed high frequency response for realistic reproduction of vocals and instruments.
- 5 1/4" (133mm) Dynamic Balance Bilaminate Organic Fiber Drivers are lightweight and stiff with good damping for high efficiency, excellent bass and lower distortion.
- Critically Tuned Flared Port minimizes port noise ("chuffing") for good low frequency extension.
- Non-resonant all-MDF enclosure construction ensures cleaner, clearer, more lifelike sound quality.
- Dual 5-way binding posts for more secure hook-up options, and bi-wiring and bi-amping flexibility.

OVERALL DIMENSIONS:  
 15 7/16" H X 8" W X 11 3/4" D (39.1CM H X 20.32CM W X 29.85CM D)  
 OVERALL FREQUENCY RESPONSE: 43Hz - 25kHz

SEE SPECIFICATIONS FOR MORE DETAILED PRODUCT INFORMATION.



BLACK OAK CHERRY

**TSi100**

- 1" (25mm) fabric/polymer composite dynamic Balance dome tweeter with powerful neodymium magnet structure delivers clear and detailed high frequency response for realistic reproduction of vocals and instruments.
- Dynamic Balance drivers are lightweight and stiff with good damping for high efficiency, excellent bass and lower distortion.
- Critically tuned flared port minimizes port noise ("chuffing") for good low frequency extension. Non-resonant all-MDF enclosure construction with
- 3/4" thick baffles ensures cleaner, clearer, more lifelike sound quality.
- Dual 5-way binding posts for more secure hook-up options, and bi-wiring and bi-amping flexibility.

OVERALL DIMENSIONS:  
 11" H X 7" W X 10 1/4" D (27.94CM H X 17.78CM W X 25.90CM D)  
 OVERALL FREQUENCY RESPONSE: 53Hz - 25kHz

SEE SPECIFICATIONS FOR MORE DETAILED PRODUCT INFORMATION.



BLACK OAK CHERRY



TSi200

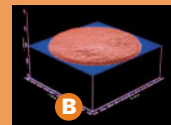
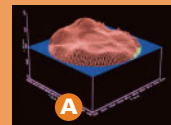


TSi100



**DYNAMIC BALANCE®**

Advanced laser imaging technology allowed Polk Audio engineers to see the entire vibrating surface of a driver and tweeter; they could actually see the resonance develop on the speaker cones—resonance that is the root cause of loudspeaker distortion (A). Being able to see the resonance develop, they determined the "Dynamic Balance" of high-tech materials, geometry and construction that effectively tune out the offending resonance (B). Exclusive Dynamic Balance Composite Material Technology delivers sound that's effortlessly clean and clear, even at lifelike volume. See more about Dynamic Balance at [www.polkaudio.com/catalog/technology/](http://www.polkaudio.com/catalog/technology/).



## CENTER CHANNEL SPEAKERS

The importance of a good center channel speaker, one with the same sound characteristics as the rest of your system, cannot be emphasized enough. Sure, virtually all of the big sound effects you enjoy in a movie happen in surround. But a center channel gives you consistency so that sound panning across your front stage doesn't change as it transitions across the center channel. The CS10 and CS20 use the same drivers and tweeters as the rest of the TS/ Series, so your surround sound is always consistent, always realistic

### CS20

#### OVERALL DIMENSIONS:

7 3/8" H X 20" W X 10 3/4" D (18.7CM H X 50.8CM W X 27.3CM D)

OVERALL FREQUENCY RESPONSE: 48Hz - 25kHz

### CS10

#### OVERALL DIMENSIONS:

6 1/2" H X 20" W X 9 3/4" D (16.5CM H X 50.8CM W X CM D)

OVERALL FREQUENCY RESPONSE: 53Hz - 25kHz

SEE SPECIFICATIONS FOR MORE DETAILED PRODUCT INFORMATION.



BLACK OAK CHERRY

## CS20, CS10

- 1" (25mm) bilaminate silk/polymer composite Dynamic Balance dome tweeter with powerful neodymium magnet structure delivers clear and detailed high frequency response for realistic reproduction of vocals and instruments.
- 6 1/2" (165mm) CS20 and 5 1/4" (133mm) CS10 Dynamic Balance bilaminate organic fiber drivers are lightweight and stiff with good damping for high efficiency, excellent bass and lower distortion.
- Critically tuned flared port minimizes port noise ("chuffing") for good low frequency extension, resulting in natural, full-bodied sound with rich bass.
- High-gloss piano finish complements the latest trends in flat screen TVs.
- Narrow baffle profiles create superior three-dimensional imaging and sound stage.
- Computer modeled anti-diffraction grille.
- Non-resonant all MDF enclosure construction with 3/4" thick baffles ensures cleaner, clearer, more lifelike sound quality.
- Reversible-design center channel speaker cabinet can be turned upside down to aim "up" when placed under a video monitor.
- Magnetically shielded for safe placement near TVs with no risk of video distortion.



CS20



CS10

## STABILIZER FEET

Floorstanding TS/Tower Speaker models feature bold, fat stabilizer feet. These stylish feet ensure stability on carpet or hard floors so that all of the speaker's energy goes into making sound instead of rocking the speaker. Stabilizer feet help the Monitor Series Floorstanding Tower Speakers deliver more precise bass response and superior imaging.



polk  
technology

**TSi500 SYSTEM\***

Sure you're on a budget, but you can still make your audio dream come true. Start with a pair of TSi500 Floorstanding Loudspeakers for a multi-channel home theater or music system. Add a voice-matched CS20 Center Channel, a pair of TSi200's if you're building a 5.1 system and a PSW125 Subwoofer. That is one very impressive, very affordable configuration. Want to expand to a 6.1 or 7.1 surround system? Then add the highly versatile OWM3 Surround Satellite. It produces surprisingly impressive sound for such a small unobtrusive speaker.

\*RECOMMENDED SYSTEMS YOU CAN PUT TOGETHER FOR HIGH-PERFORMANCE AUDIO.



TSi500

TSi200

CS20

PSW125

**TSi200 SYSTEM\***

If your budget or your room is smaller, consider a TSi Bookshelf System. Start with a pair of TSi/200's in the front. Add a CS10 Center Channel, voice-matched of course, Then a pair of TSi/100's for your surrounds. Add a PSW110 Subwoofer, and you've got a superb 5.1 home theater system. All of it courtesy of Polk Audio quality and performance.

\*RECOMMENDED SYSTEMS YOU CAN PUT TOGETHER FOR HIGH-PERFORMANCE AUDIO.



TSi100

TSi200

CS10

PSW110

**RECOMMENDED SYSTEM CONFIGURATIONS**

L/R FRONT SPEAKERS	CENTER SPEAKER	5.1 SURROUNDS	6.1 SURROUNDS	7.1 SURROUNDS	SUBWOOFER
TS/500	CS20	TS/200, TSi/100 or OWM3	OWM3	OWM3	PSW125
TS/400	CS20	TS/200, TSi/100 or OWM3	OWM3	OWM3	PSW125 or PSW111
TS/300	CS10	TS/100 or OWM3	OWM3	OWM3	PSW111 or PSW110
TS/200	CS10	TS/100 or OWM3	OWM3	OWM3	PSW110
TS/100	CS10	TS/100 or OWM3	OWM3	OWM3	PSW10

**PSW125**

- 12" Dynamic Balance composite woofer Driver creates tight, musical bass.
- Downward firing port couples to the room for more bass impact.
- More powerful motor structure for a higher BL product, (the measure of the motive force applied to the cone) results in louder, deeper and punchier bass than previous Polk woofers in this price category.
- Klippel Optimized woofer—by using a state-of-the-art Klippel Distortion Analyzer, Polk engineers were able to optimize the woofer's motor structure, voice coil alignment and suspension for the best possible performance even at extreme listening levels.
- Compression circuitry limits distortion at earth-shaking volume levels.
- Built-in high current amplifier supplies all the good, clean power you need for big bass. The PSW125 features a Class A/B Amp.

12" POWERED SUBWOOFER, 100 WATTS CONTINUOUS AVERAGE OUTPUT  
 OVERALL DIMENSIONS:  
 14 1/2" H X 14 1/4" W X 17" D (36.83CM H X 36.2CM W X 43.18CM D)  
 OVERALL FREQUENCY RESPONSE: 60Hz - 110Hz

SEE SPECIFICATIONS FOR MORE DETAILED PRODUCT INFORMATION.



BLACK CHERRY



PSW125

**PSW111**

- PSW111 compact design is the perfect complement to Polk TS/i Series and tucks easily out of the way.
- Dynamic Balance® composite 8" driver produces an incredibly tight, musical bass.
- Downward firing port couples to the room for more bass impact.
- Powerful motor structure for a higher BL product, (the measure of the motive force applied to the cone) results in astonishingly loud, deep bass from a surprisingly small enclosure.
- Klippel Optimized Woofer—the woofer's motor structure, voice coil alignment and suspension have been optimized for the best possible performance even at extreme listening levels.

8" POWERED SUBWOOFER, 150 WATTS CONTINUOUS AVERAGE OUTPUT  
 OVERALL DIMENSIONS:  
 12 1/8" H X 11" W X 13" D (30.79CM H X 27.94 CM W X 33.02CM D)  
 OVERALL FREQUENCY RESPONSE: 28Hz - 200Hz

SEE SPECIFICATIONS FOR MORE DETAILED PRODUCT INFORMATION.



BLACK

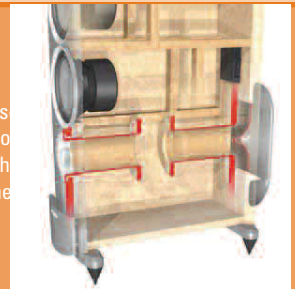


PSW111

polk technology

**POWERPORT®**

Polk Audio loudspeakers shatter the boundaries of bass response with patented PowerPort bass venting technology. Conventional ports have limitations: air turbulence at the mouth of the port can cause "port noise and bass output losses of up to 3dB. (A loss of 3dB means that half of your amplifier power is being wasted or turbulence instead of bass!) The distinctive design of the Polk Audio PowerPort gradually slows air exiting the port, vastly reducing turbulence, port noise and energy loss. The result is bass that you will feel as well as hear—bass that reaches out, grabs you by the lapels and shakes you up—for a completely visceral and emotional movie and music experience. See more about Power Port at [www.polkaudio.com/catalog/technology/](http://www.polkaudio.com/catalog/technology/).





**PSW110**

- Dynamic Balance® composite 10" driver creates tight, musical bass.
- Downward firing port couples to the room for more bass impact.
- More powerful motor structure for a higher BL product, (the measure of the motive force applied to the cone) results in louder, deeper and punchier bass than previous Polk subwoofers in this price category.
- Klippel Optimized Woofer—optimizes the woofer’s motor structure, voice coil alignment and suspension for the best possible performance even at extreme listening levels.
- Compression circuitry limits distortion at earth-shaking volume levels.

10" POWERED SUBWOOFER, 100 WATTS CONTINUOUS AVERAGE OUTPUT  
 OVERALL DIMENSIONS:  
 14 1/2" H X 14 1/4" W X 17" D (36.83CM H X 36.19 CM W X 43.18CM D)  
 OVERALL FREQUENCY RESPONSE: 32Hz - 200Hz

SEE SPECIFICATIONS FOR MORE DETAILED PRODUCT INFORMATION.



BLACK CHERRY



PSW110

**PSW10**

For a small or mid-sized room, for musical depth or home theater effects, this little powerhouse is a classic Polk Audio value. With a clean, stylish look that complements the TS/i Series (but looks great with any combination of speakers), and a low distortion, long throw Dynamic Balance driver, the PSW10 is built for fast, accurate response with real bass impact and weight.

- Solidly built subwoofer enclosure with low cabinet resonance.
- Multiple hook-up options make the PSW10 compatible with virtually any equipment.
- High current built-in power amplifier with Auto ON/OFF protection circuitry.
- Take control and achieve better blending with a broad range of easily adjustable controls.

10" POWERED SUBWOOFER, 50 WATTS CONTINUOUS AVERAGE OUTPUT  
 OVERALL DIMENSIONS:  
 14 3/8" H X 14" W X 16 1/8" D (36.51CM H X 35.56CM W X 40.96CM D)  
 OVERALL FREQUENCY RESPONSE: 35Hz - 200Hz

SEE SPECIFICATIONS FOR MORE DETAILED PRODUCT INFORMATION.



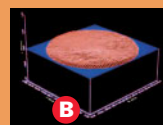
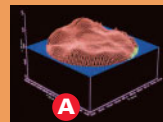
BLACK CHERRY



PSW10

**DYNAMIC BALANCE®**

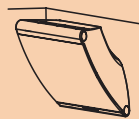
Advanced laser imaging technology allowed Polk Audio engineers to see the entire vibrating surface of a driver and tweeter; they could actually see the resonance develop on the speaker cones—resonance that is the root cause of loudspeaker distortion (A). Being able to see the resonance develop, they determined the “Dynamic Balance” of high-tech materials, geometry and construction that effectively tune out the offending resonance (B). Exclusive Dynamic Balance Composite Material Technology delivers sound that’s effortlessly clean and clear, even at lifelike volume. See more about Dynamic Balance at [www.polkaudio.com/catalog/technology/](http://www.polkaudio.com/catalog/technology/).



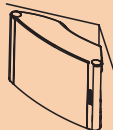
polk  
technology

## SEVEN WAYS TO ENJOY GREAT SOUND

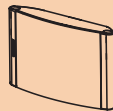
The OWM3 is a dedicated surround/satellite that's about as unobtrusive as an on-wall speaker can be. Equally capable of being part of a 2.1 2nd zone system, or as a multi-channel surround system, the OWM3's unique curved design and removable base make it easy to mount in a corner or simply place on a table. In fact, with the OWM3 you have seven different mounting possibilities, which makes it about the most versatile surround speaker anywhere.



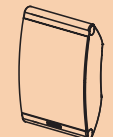
1. ANGLED WALL MOUNT



2. CORNER MOUNT



3. HORIZONTAL WALL MOUNT



4. VERTICAL WALL MOUNT



5. SHELF MOUNT



6. HORIZONTAL SHELF MOUNT



7. STANDARD ARTICULATING WALL MOUNT BRACKET (NOT INCLUDED)

## OWM3

- Stunning curved design and removable base make it easy to mount on a wall, on a ceiling, in a corner, or simply place on a table.
- Capable of being part of a 2.1 second zone system, or as a 5.1, 6.1 or 7.1 channel surround system.
- 4 1/2" (114mm) Dynamic Balance composite cone driver is lightweight yet stiff, with good damping for high efficiency, excellent mid-bass and low distortion.
- 1" (25mm) dome tweeter delivers clear and detailed highs.
- Capacitive Coupling bass technology for low frequency response that's truly surprising given the speaker's ultra compact size.
- Super dense glass-filled ABS creates an acoustically inert cabinet, insuring an extremely clean and low coloration midrange response.
- 5-way gold-plated binding posts for the most secure hook-up options.

OVERALL DIMENSIONS:  
 WITHOUT STAND:  
 10" H X 7" W X 4" D  
 (25.4 CM H X 17.8 CM W X 10.4 CM D)  
 WITH STAND:  
 10" H X 7" W X 4 11/16" D  
 (25.4 CM H X 17.8 CM W X 11.9 CM D)  
 PRODUCT WEIGHT: 4.4 LBS (2.0 KG)

SEE SPECIFICATIONS FOR MORE DETAILED PRODUCT INFORMATION.

	
WHITE PAINTABLE	BLACK PAINTABLE



OWM3

polk  
technology

## CAPACITIVE COUPLING

Capacitive Coupling Technology (CCT) works by creating a gentle impedance dip within the range where conventional sealed-box loudspeakers are subject to severely reduced bass output. Lower impedance within this critical frequency range means improved acoustic sensitivity by exploiting power amplifiers' ability to deliver more power to the bass frequencies. Thus, the OWM3 plays surprisingly loud over the lowest portion of its passband. The net result for the OWM3's performance is 3dB more bass output over a fairly broad range. It's as if the loudspeaker's enclosure grew by 30 to 50% in volume. And it's why you'll be astonished by just how loud and how low a satellite/surround loudspeaker this compact goes.

## FLOORSTANDING LOUDSPEAKERS

	TS/500	TS/400	TS/300
Driver Complement	4 - 6 1/2" (16.5cm) bi-laminate organic fiber drivers. 1 - 1" (2.5cm) bilaminate silk dome tweeter	3 - 5 1/4" (13.3 cm) bi-laminate organic fiber drivers. 1 - 1" (2.5cm) bilaminate silk dome tweeter	2 - 5 1/4" (13.3 cm) bi-laminate organic fiber drivers. 1 - 1" (2.5cm) bilaminate silk dome tweeter
Frequency Response: Overall / -3dB Limits	28Hz - 25kHz / 38Hz - 24kHz	34Hz - 25kHz / 44Hz - 24kHz	38Hz - 25kHz / 47Hz - 24kHz
Crossover Frequency	2500kHz	2500kHz	2500kHz
Impedance	4 Ohms	4 Ohms	4 Ohms
Recommended Amplification	20 - 275 Watts / channel	20 - 200 Watts / channel	20 - 150 Watts/channel
Efficiency	91dB	91dB	90dB
Available Finish	black or cherry	black or cherry	black or cherry
Product Weight / Shipping Weight	45 lbs / 50.38 lbs each (20.41 kg / 22.85 kg each)	32lbs / 36.96 lbs each (14.51 kg / 16.76 kg each)	26 lbs / 30.36 lbs each (11.79 kg / 13.77 kg each)
Overall Dimensions	44 3/8" H x 8 1/4" W x 14 3/4" D 112.7cm H x 20.9cm W x 37.5cm D	38 7/8" H x 7" W x 14 1/4" D 98.7cm H x 17.78cm W x 36.2cm D	36 3/8" H x 7" W x 11 1/2" D 92.4cm H x 17.78cm W x 29.21cm D

## BOOKSHELF LOUDSPEAKERS

	TS/200	TS/100
Driver Complement	2 - 5 1/4" (13.3cm) bilam. organic fiber drivers, 1 - 1" (2.5cm) bilaminate silk dome tweeter	1 - 5 1/4" (13.3cm) bilam. organic fiber drivers 1 - 1" (2.5cm) bilaminate silk dome tweeter
Frequency Response: Overall / -3dB Limits	43Hz - 25kHz / 50Hz - 24kHz	53Hz - 25kHz / 61Hz - 24kHz
Impedance	4 Ohms	4 Ohms
Crossover Frequency	2500kHz	2500kHz
Recommended Amplification	20 - 150 Watts / channel	20 - 100 Watts / channel
Efficiency	89dB	89dB
Available Finish	black or cherry	black or cherry
Product Weight / Shipping Weight	17 lbs each / 36.3 lbs pair (7.71 kg each / 16.5 kg pair)	10 lbs each / 21.34 lbs pair (4.53 kg each / 9.7 kg pair)
Overall Dimensions	15 7/16" H x 8" W x 11 3/4" D 39.1cm H x 20.32cm W x 29.85cm D	11" H x 7" W x 10 1/4" D 27.94cm H x 17.78cm W x 25.90cm D

## CENTER CHANNEL LOUDSPEAKERS

	CS20	CS10
Driver Complement	2 - 6 1/2" (cm) bilam. organic fiber drivers, 1 - 1" (2.5cm) bilaminate silk dome tweeter	2 - 5 1/2" (cm) bilam. organic fiber drivers, 1 - 3/4" (1.9cm) bilaminate silk dome tweeter
Frequency Response: Overall / -3dB Limits	48Hz - 25kHz / 58Hz - 24kHz	53Hz - 25kHz / 63Hz - 24kHz
Impedance	4 Ohms	4 Ohms
Crossover Frequency	2500kHz	2500kHz
Recommended Amplification	20 - 150 Watts / channel	20 - 125 Watts / channel
Efficiency	91dB	91dB
Magnetic Shielding	yes	yes
Available Finish	black or cherry	black or cherry
Product Weight / Shipping Weight	19 lbs / 22 lbs each (8.61 kg / 9.97 kg pair)	16 lbs / 18.26 lbs each (7.26 kg / 8.28 kg pair)
Dimensions	7 3/8" H x 20" W x 10 3/4" D (18.73cm H x 50.8cm W x 27.3cm D)	6 1/2" H x 20" W x 9 3/4" D (16.5cm H x 50.8cm W x 24.77cm D)

We're fanatics when it comes to providing you useful, accurate information that can help you evaluate our products. But as we all know, we live in an imperfect world. At least some of us do. That's why performance specifications and product dimensions are subject to change without notice. For the most current specifications see our website, [www.polkaudio.com/home](http://www.polkaudio.com/home).

Polk Audio is a Directed Electronics company which trades on NASDAQ under the symbol DEIX. Investor information can be found at <http://investor.directed.com>.

Polk Audio, Polk, PowerPort, Dynamic Balance, F/X, Atrium, Big Speaker Sound Without The Big Speaker, High Velocity Compression Drive, Acoustic Resonance Control, ARC Port, Casket Basket, I-Sonic, SurroundBar & SDA are registered trademarks of Britannia Investment Corporation used under license by Polk Audio, Incorporated. Polk Audio Designs & miDock are trademarks of Britannia Investment Corporation used under license by Polk Audio, Incorporated.

**POWERED SUBWOOFERS**

	<b>PSW125</b>	<b>PSW111</b>
Driver Complement	1 - 12" (30.5cm)	1 - 8" (20.32cm)
Frequency Response: Overall / -3dB Limits	25Hz - 200Hz / 30Hz - 160Hz	28Hz - 200Hz / 35Hz - 160Hz
CEA 2010* Ultra Low / Low	90.5dB / 118dB	75.4dB / 115.5dB
Continuous Power	100 Watts	150 Watts
Dynamic Power	200 Watts	300 Watts
Crossover Frequency	60Hz - 160Hz	80Hz - 200Hz
Magnetic Shielding	no	no
Available Finish	black or cherry	black
Product Weight / Shipping Weight	40.1 lbs / 44 lbs (18.2 kg / 20 kg)	20.3 lbs / 23 lbs (9.2 kg / 10.4 kg)
Dimensions	14 1/2" H x 14 1/4" W x 17" D 36.83cm H x 36.20cm W x 43.18cm D	12 1/8" H x 11" W x 13" D 30.80cm H x 27.94cm W x 33.02cm D

**POWERED SUBWOOFERS**

	<b>PSW110</b>	<b>PSW10</b>
Driver Complement	1 - 10" (25.4cm)	1 - 10" (25.4cm)
Frequency Response: Overall / -3dB Limits	32Hz - 200Hz / 38Hz - 160Hz	35Hz - 200Hz / 40Hz - 160Hz
CEA 2010* Ultra Low / Low	8.7dB / 114.6dB	tbd
Continuous Power	100 Watts	50 Watts
Dynamic Power	200 Watts	100 Watts
Crossover Frequency	60Hz - 160Hz	80Hz - 160Hz
Magnetic Shielding	no	no
Available Finish	black or cherry	black or cherry
Product Weight / Shipping Weight	33.5 lbs / 37 lbs (15.2 kg / 16.8 kg)	26 lbs / 30 lbs (11.79kg / 13.61 kg)
Dimensions	14 1/2" H x 14 1/4" W x 17" D 36.83cm H x 36.20cm W x 43.18cm D	14 3/8" H x 14" W x 16 1/8" D 36.51cm H x 35.56cm W x 40.96cm D

**OWM3 SURROUND/SATELLITE**

	<b>OWM3</b>
Driver Complement	1 - 4 1/2" (114mm) Dynamic Balance Driver; 1 - 1" (25mm) silk dome tweeter
Frequency Response: Overall / -3dB Limits	80Hz - 25kHz / 100Hz - 24kHz
Impedance	4 Ohms
Recommended Amplification	20-100 Watts
Efficiency	89dB
Continuous Power	100 Watts
Dynamic Power	200 Watts
Magnetic Shielding	no
Available Finish	black paintable or white paintable
Product Weight / Shipping Weight	4.4 lbs with stand each / 10.28 lbs pair (2.0 kg with stand each / 4.66 kg pair)
Dimensions	10" H x 7" W x 4" D (25.4cm H x 17.8cm W x 10.4cm D without stand) 10" H x 7" W x 4 11/16" D (25.4cm H x 17.8cm W x 11.9cm D with stand)

\* For an explanation of CEA 2010 go to [Http://www.polkaudio.com/partners/paper.php?id=12](http://www.polkaudio.com/partners/paper.php?id=12)

**POLK AUDIO**

5601 METRO DRIVE  
BALTIMORE, MD 21215

[WWW.POLKAUDIO.COM](http://WWW.POLKAUDIO.COM)

CUSTOMER SERVICE:  
800-377-7655 (USA & CANADA)  
410-358-3600 (WORLDWIDE)

COPYRIGHT© APRIL 2008  
ALL RIGHTS RESERVED.

